

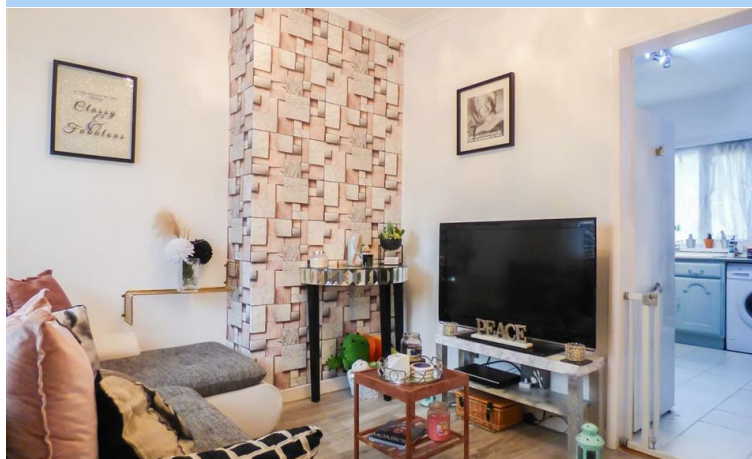


28, Taunton Road,  
Gravesend, DA11 9BY

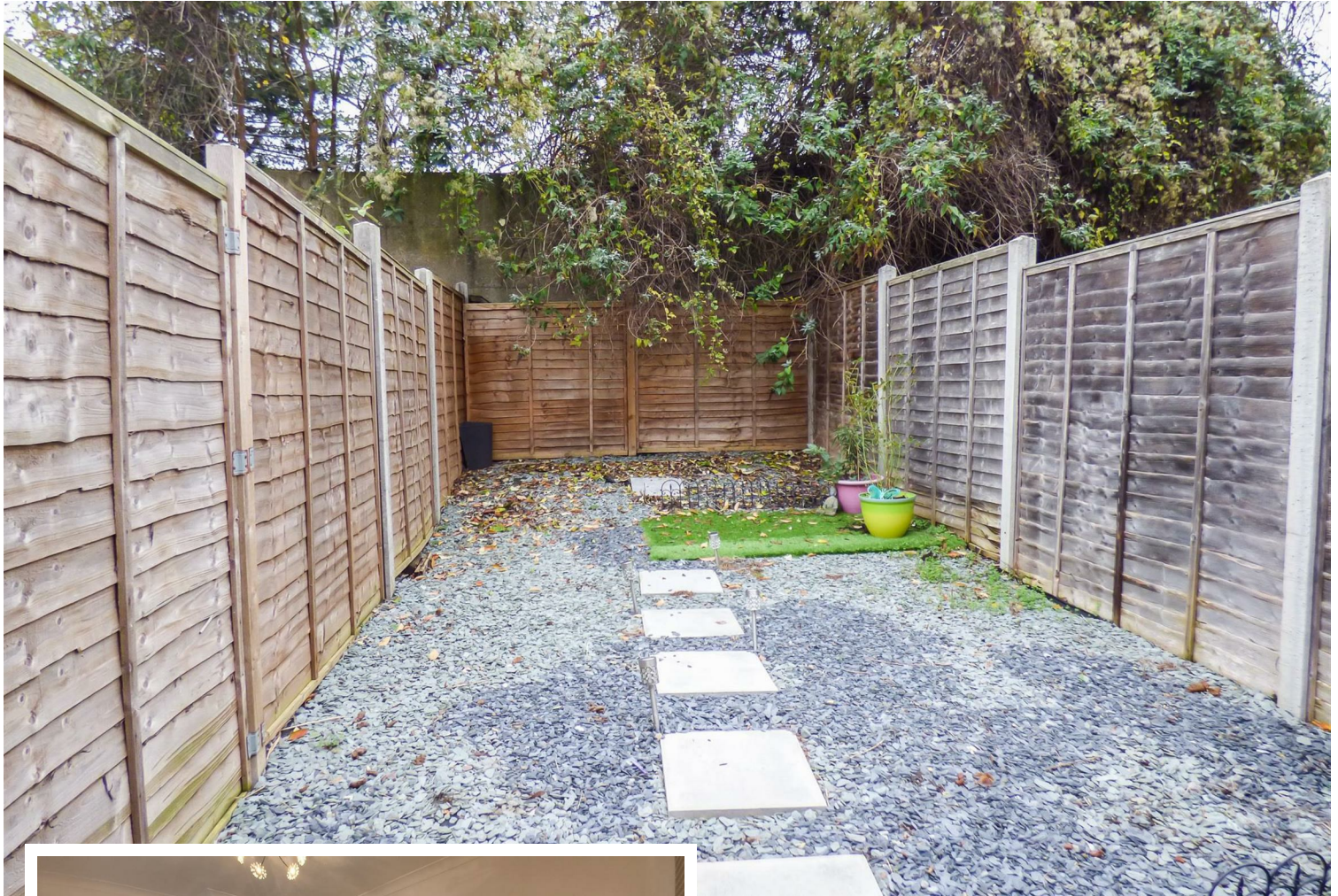
Asking Price £225,000



- 2 Double Bedroom Mid Terraced Home
- Close to Ebbsfleet station
- Move-in Ready
- Low Maintenance Rear Garden



28 Taunton Road, Gravesend, , DA11 9BY



#### PROPERTY DESCRIPTION

This well presented 2 double bedroom mid terrace property, situated close to Ebbsfleet train station, would be perfect for first time buyers and commuters. With a cosy lounge, kitchen diner with breakfast bar, downstairs bathroom, 2 double bedrooms upstairs and a low maintenance garden to the rear.

#### LOCATION DESCRIPTION

Located less than a mile to Ebbsfleet train station with excellent links to London and Europe (Ebbsfleet to London St Pancras around 18 minutes). Locally there is a small commercial estate with a Costa coffee, a café and a gym. The A2 is situated 2 miles away with links to London and the south.

From the street is a canopied entrance with a uPVC and glazed door opening into..



### LOUNGE

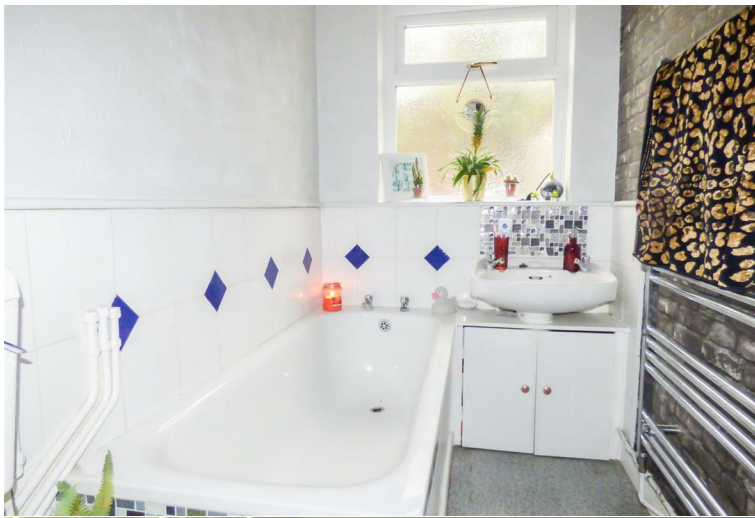
3.53 x 2.72 (11'7" x 8'11")

Perfect for a couple or a small family, this neutrally decorated cosy lounge with laminate flooring has ample room for a sofa and tv unit. Double glazed window out to front and an opening leading to..

### KITCHEN

3.53 x 3.32 (11'7" x 10'11")

A range of painted wall and base units with a roll top work surfaces. 1 1/2 bowl sink and drainer with double glazed window over. Space for free standing oven, fridge freezer and under counter washing machine. A wall hung combi boiler housed in a white cupboard and a small breakfast bar with cupboard housing the meters underneath. Stairs leading to first floor. An opening leading to...



### COAT ROOM

1.04 x 0.83 (3'5" x 2'9")

A uPVC and glazed door opening to garden and a wooden door leading to..

### BATHROOM

2.52 x 1.38 (8'3" x 4'6")

A low level WC, white bath and tiled surround and a basin with vanity unit underneath. A chrome wall hung towel rail and a double glazed frosted window out to garden.



### FIRST FLOOR

#### LANDING

A small landing with doors leading to..

#### BEDROOM ONE

3.52 x 2.75 (11'7" x 9'0")

A double bedroom with modern décor, light wood laminate flooring and double glazed window out to front.

#### BEDROOM TWO

3.33 x 2.74 (10'11" x 9'0")

Another double bedroom with a grey wood effect laminate flooring. Ample room for double bed and furniture. A recessed area with curtain across it, currently being used as a wardrobe. Double glazed window out to garden.



#### REAR GARDEN

A painted concrete area ideal for a table chairs. Leading to a mainly shingled garden for easy maintenance. Paving slabs run up to the rear of the garden. All enclosed by close board wood panel fencing.

#### SERVICES

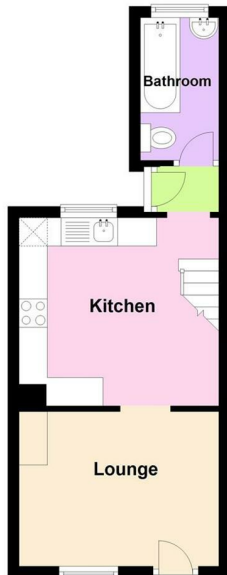


Mains Gas, Electricity, Water and Drainage.

Council Tax: Gravesham Borough Council  
Band: B 2020/2021 Charges: £1,432.50



Ground Floor



First Floor



Energy Efficiency Rating		
	Current	Potential
<i>Very energy efficient - lower running costs</i>		
(92 plus) <b>A</b>		<b>86</b>
(81-91) <b>B</b>		
(69-80) <b>C</b>		
(55-68) <b>D</b>	<b>67</b>	
(39-54) <b>E</b>		
(21-38) <b>F</b>		
(1-20) <b>G</b>		
<i>Not energy efficient - higher running costs</i>		
<b>England &amp; Wales</b>	EU Directive 2002/91/EC	

184 Parrock Street  
Gravesend  
Kent  
DA12 1EN

www.sealeys.co.uk  
Email: sales@sealeys.co.uk  
Tel: 01474 369368



Agents Note: Whilst every care has been taken to prepare these marketing particulars, they are for guidance purposes only. These details, description and measurements do not form part of a contract and whilst every effort has been made to ensure accuracy this cannot be guaranteed. Interested parties must satisfy themselves by inspection or otherwise as to the correctness of them. Floor plans are not to scale and are for illustration purposes only. Any equipment, fixtures and fittings or any item referred to have not been tested unless specifically stated.